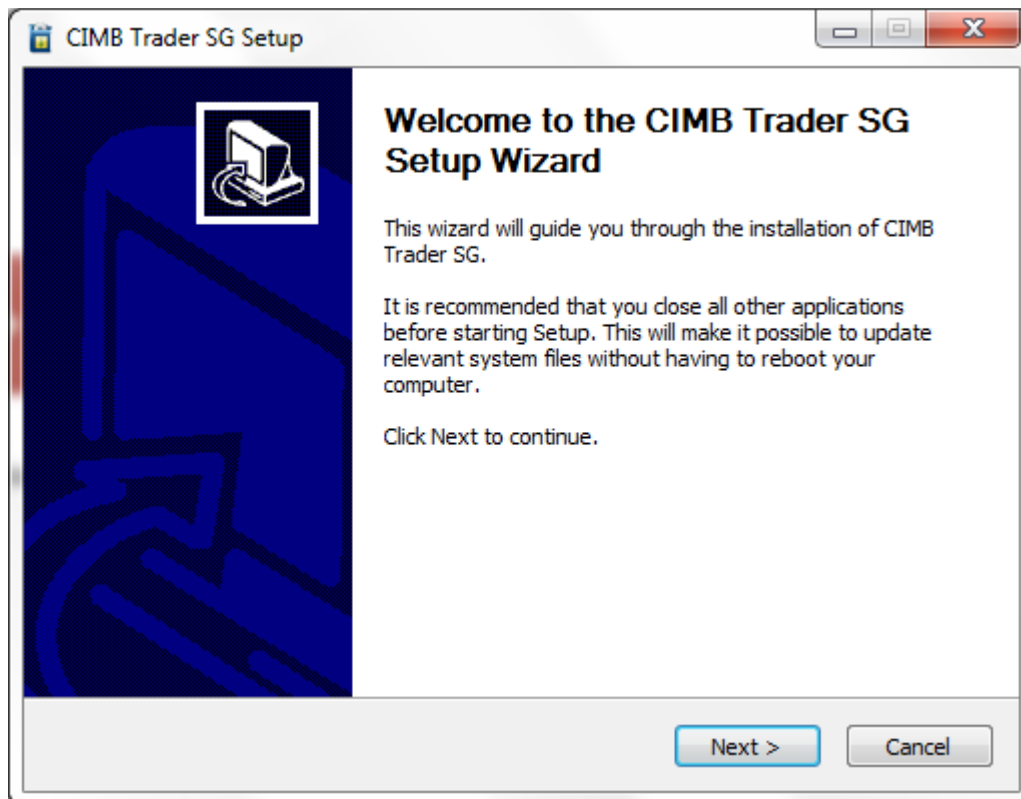
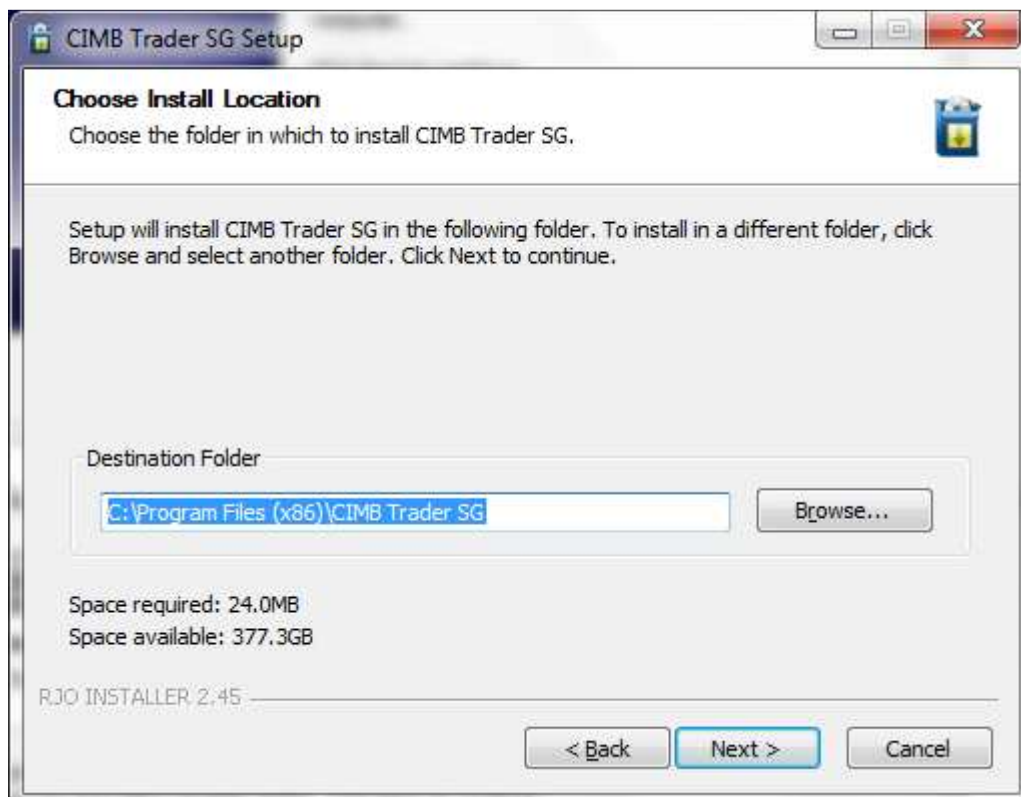


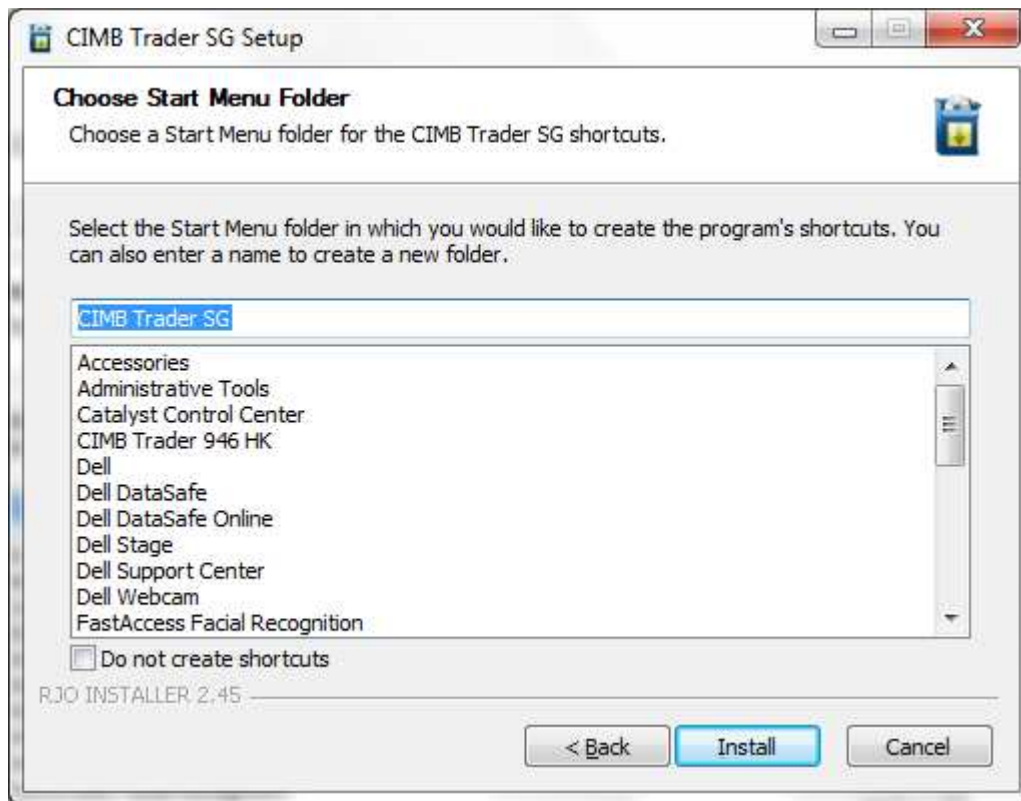
1. Run CIMB Trader Setup Wizard, click Next to continue.



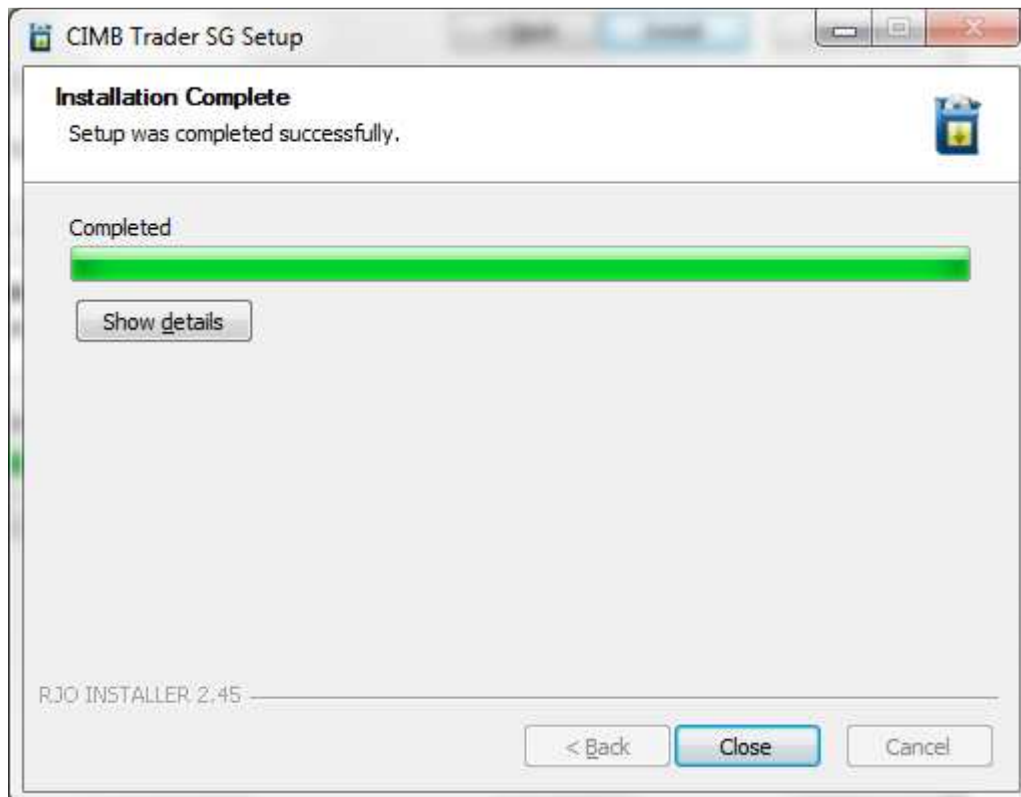
2. Choose the location in which to install CIMB Trader. Click Next to continue.



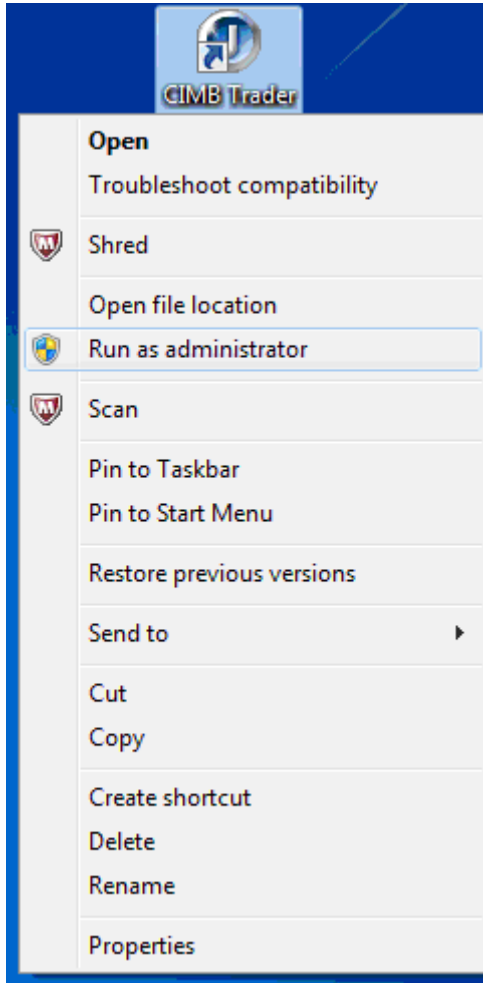
3. Click Install to continue.



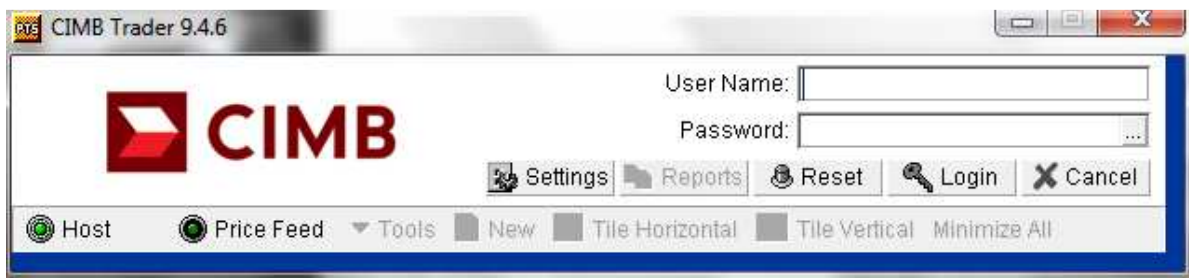
4. Installation Completed. Select Close.



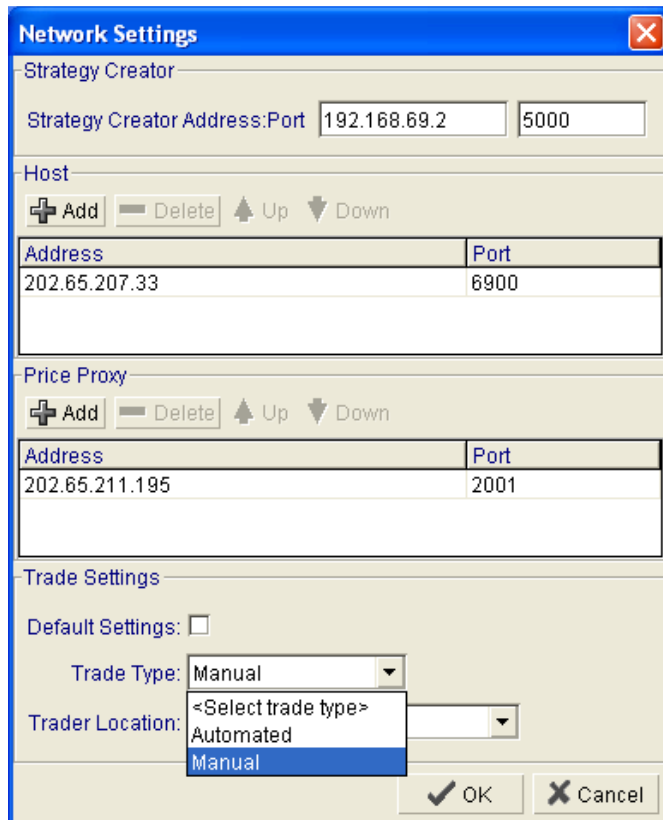
5. Launch CIMB Trader Application from desktop. For Windows 7 users, right click and select "Run as administrator".



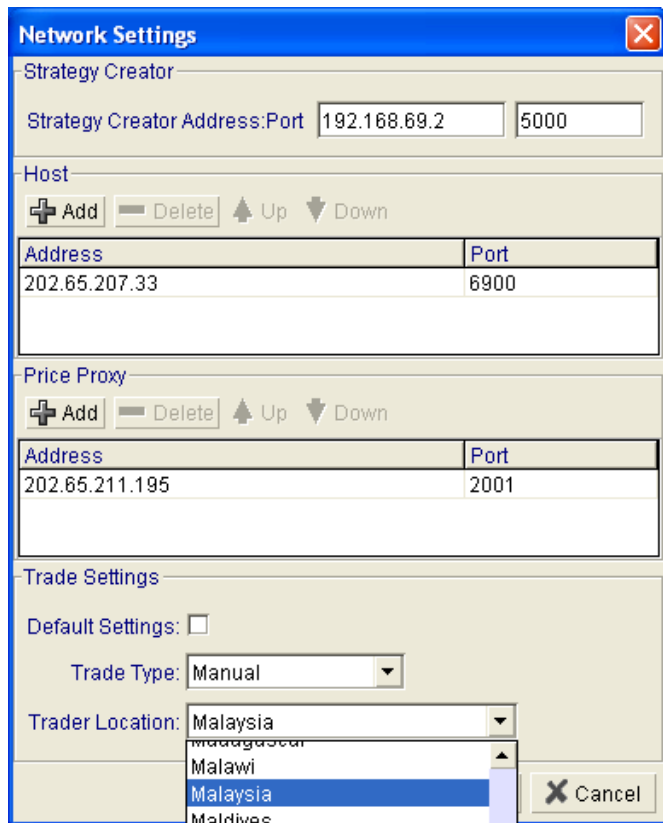
6. Login Page window prompted. Click on Settings



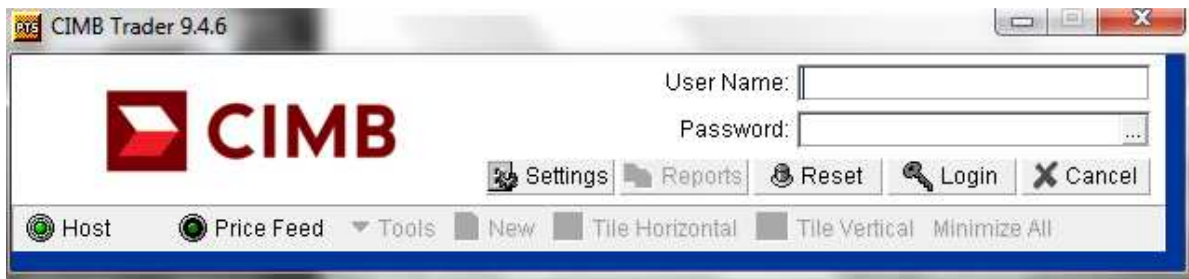
7. Select "Manual" for Trade Type.



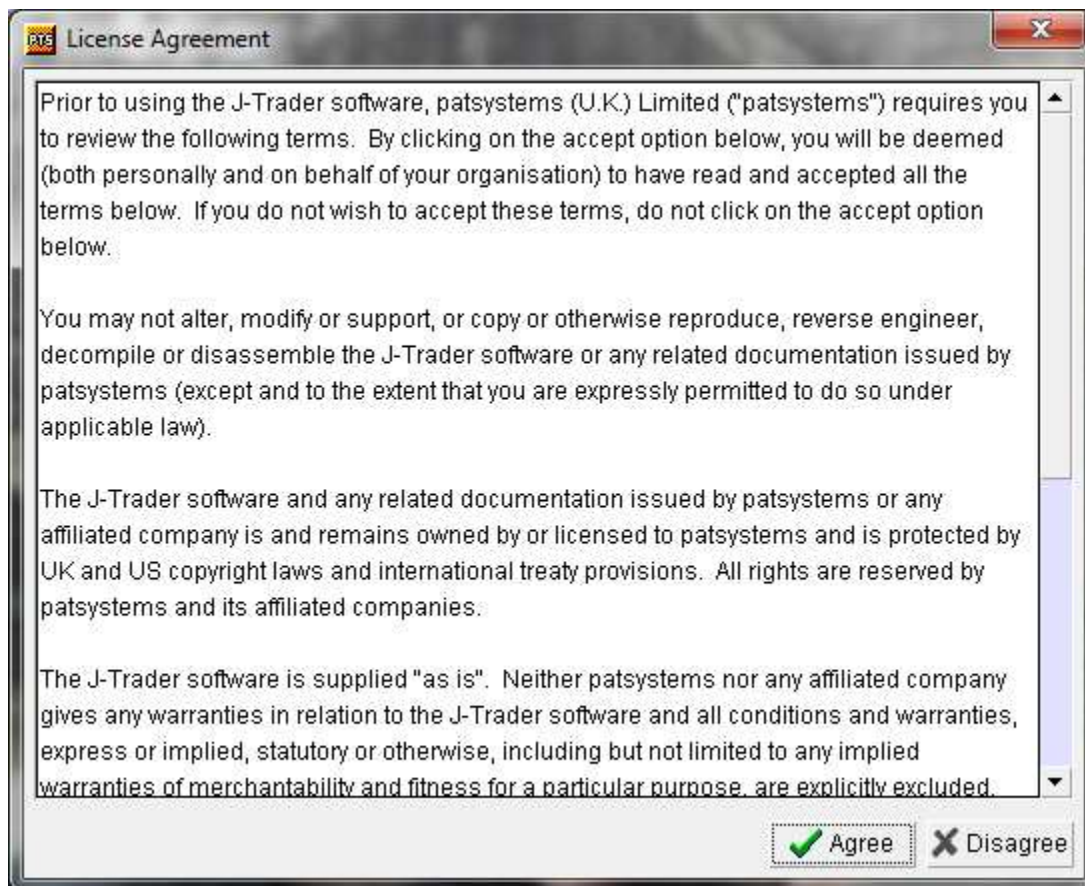
8. Select Trader Location.



9. Key in User Name and Password



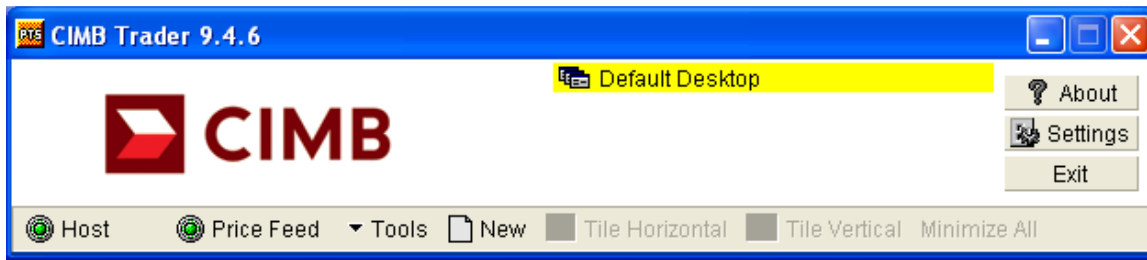
10. Study the License Agreement. Select Agree.



11. Downloading Data window appears.



12. Login successful. Click “New” for a new window.



13. Click “Add” to pull out contracts from specific exchanges in Hot Quotes page.

Contract	Bid Vol	Bid	Offer	Offer Vol	Last	Change	Total Vol	Last Vol	Opening	High	Low	YDSP
HKEX \ HSI \ MAY12	2	19208	19209	6	19207	45	31135	1	19200	19243	19110	19162
HKEX \ HSI \ JUN12	2	19012	19014	6	19013	40	505	1	18961	19040	18925	18973
HKEX \ HSI \ SEP12	2	18906	18909	6	18893	25	8	1	18870	18920	18840	18868
HKEX \ HSI \ DEC12	2	18889	18892	6	18840	-6	5	1	18901	18901	18840	18846
CME_CBT \ MINIDOW \ JUN12	9	12621	12623	5	12622	48	2278	2	12575	12634	12565	12574
CME_CBT \ MINIDOW \ SEP12	99	12496	12569	49	12525	22	47	4	12539	12609	12503	12503
CME_CBT \ MINIDOW \ DEC12	10	12407	12537	10	12422	0	4	1	12450	12508	12422	12422
CME_CBT \ MINIDOW \ MAR13	5	12341	12466	5			0					12355
CME_CBT \ SOYAOIL \ JUL12	11	50.65	50.68*	3	50.66	0.23	4314	1	50.56	50.92	50.46	50.43
CME_CBT \ SOYAOIL \ AUG12	11	50.86*	50.89*	1	50.87	0.23	599	1	50.75	51.07	50.70	50.64
CME_CBT \ SOYAOIL \ SEP12	12	51.06*	51.10*	3	51.11	0.27	236	1	50.95	51.34	50.94	50.84
CME_CBT \ SOYAOIL \ OCT12	11	51.23*	51.27*	3	51.37	0.35	66	1	51.35	51.39	51.12	51.02
CME_CBT \ SOYAOIL \ DEC12	12	51.60*	51.63	1	51.62	0.23	752	1	51.54	51.88	51.44	51.39
CME_CBT \ SOYAOIL \ JAN13	1	51.82*	51.86*	1	51.58	-0.03	818	2	52.48	52.48	51.27	51.61
CME_CBT \ SOYAOIL \ MAR13	1	51.99*	52.04*	1	51.94	0.16	3	1	51.94	51.94	51.94	51.78
CME_CBT \ SOYAOIL \ MAY13	1	52.09*	52.16*	1	52.25	0.36	7	1	52.10	52.26	51.96	51.89
CME \ PYS CRUDE \ JUN12	11	93.17	93.19	2	93.17	0.36	6759	1	92.77	93.38	92.70	92.81
CME \ PYS CRUDE \ JUL12	12	93.54*	93.57*	2	93.55	0.36	2184	1	93.10	93.77	93.08	93.19
(Blank Line)	11	93.82*	93.85*	2	93.81	0.33	248	1	93.42	94.02	93.37	93.48
# CME JDE \ SEP12	11	94.09*	94.13*	2	94.05	0.27	122	1	93.70	94.25	93.70	93.78
# CME_CBT JDE \ OCT12	7	94.33*	94.38*	3	94.35	0.31	54	1	94.10	94.50	94.10	94.04
# eCBOT JDE \ NOV12	2	94.51*	94.56*	1	94.16	-0.07	9363	1	94.77	95.40	93.34	94.23
# HKEX JDE \ DEC12	12	94.67*	94.71*	2	94.64	0.23	164	1	94.49	94.86	94.43	94.41
# ICE JDE \ JAN13	1	94.80*	94.91*	1	94.86	0.29	10	1	94.64	94.86	94.64	94.57
# Liffe UN12	94	8780.00	8785.00	15	8785.00	40.00	40390	2	8765.00	8825.00	8745.00	8745.00
# SGXQ UNM1							0					
# TOCOM UL12	28	8770.00	8785.00	26	8770.00	30.00	20	10	8765.00	8770.00	8765.00	8740.00
# XEurex												

14. Select “Exit” to close the application.

